

Piping Plan Reference : N/A

Pipe Specification : Api 5L-ERW-SCH20 / BS1387 HWT

Fabrication and Welding Code : BS 2971 CL 2

N.D.T. Requirement 10%

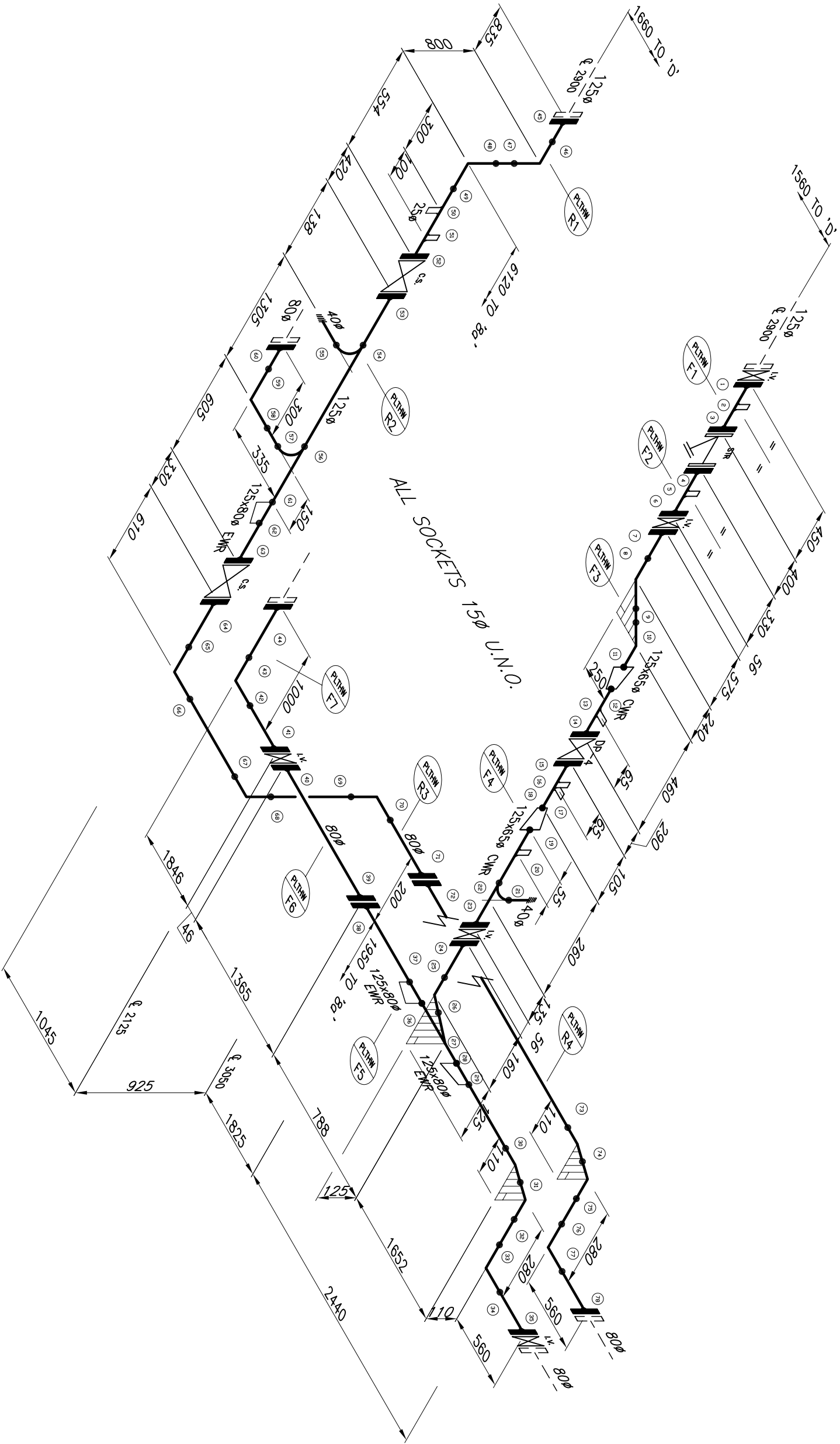
Painting/Finish Requirement Red Oxide

End Protection : PLASTIC CAPS

Material Traceability Requirement : N/A

No. Off	Item No.	Weld No.	Welder No.	Report No.
1	PLTHW-F1		20	19
1	PLTHW-F2		21	21
1	PLTHW-F3		22	22
1	PLTHW-F4		23	23
1	PLTHW-F5		24	24
1	PLTHW-F6		25	25
1	PLTHW-F7		26	26
1	PLTHW-R1		27	27
1	PLTHW-R2		28	28
1	PLTHW-R3		29	29
1	PLTHW-R4		30	30
			31	31
			32	32
			33	33
			34	34
			35	35
			36	36
			37	37
			38	38
			39	39
			40	40
			41	41
			42	42
			43	43
			44	44
			45	45
			46	46
			47	47
			48	48
			49	49
			50	50
			51	51

Client			Drawn By		
Contract			Checked By		
Location			Material		
B2 South - Heat Exchanger Plantroom			N/A		
Description			Weld No.		
125/800 LTHW F/R			Report No.		
(PRIMARY)			Welder No.		
Job No.			Sheet No.		
7			Rev.		
A					



- Notes
1. All flanges are PN25 face unless otherwise noted.
 2. Where a flange is left loose, or a pipe marked with M.L.U.V., a pipe must be left at least 150mm longer than given dimensions to field fit.
 3. Unless stated otherwise, all dimensions and elevations to be centre line of pipe, all bends 90 deg., and all butt-weld elbows are L.R.E.

Rev.	Date	Description of Revision	By	CHK	By	CHK
A	26-04	APPROVED FOR FABN	CJH	/	/	/
O	19-04	ISSUE FOR APPROVAL	CJH	/	/	/