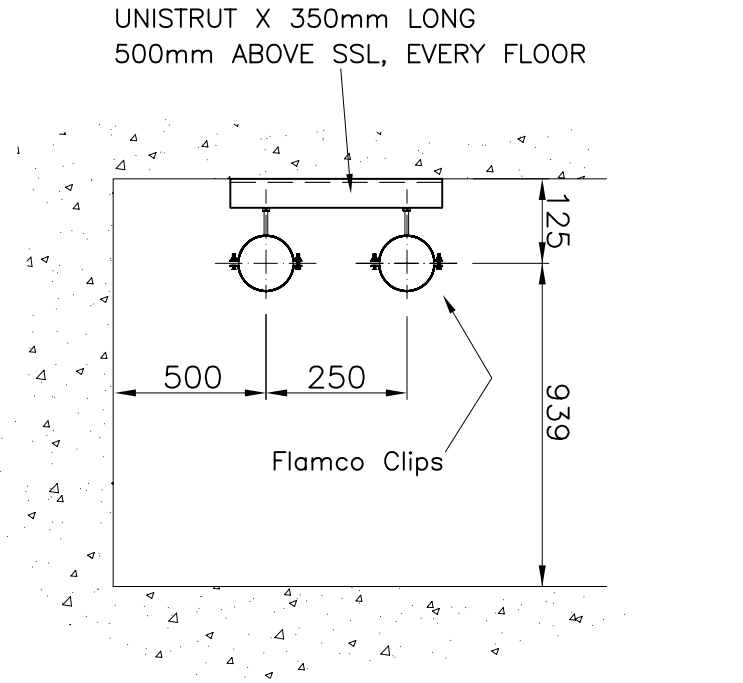
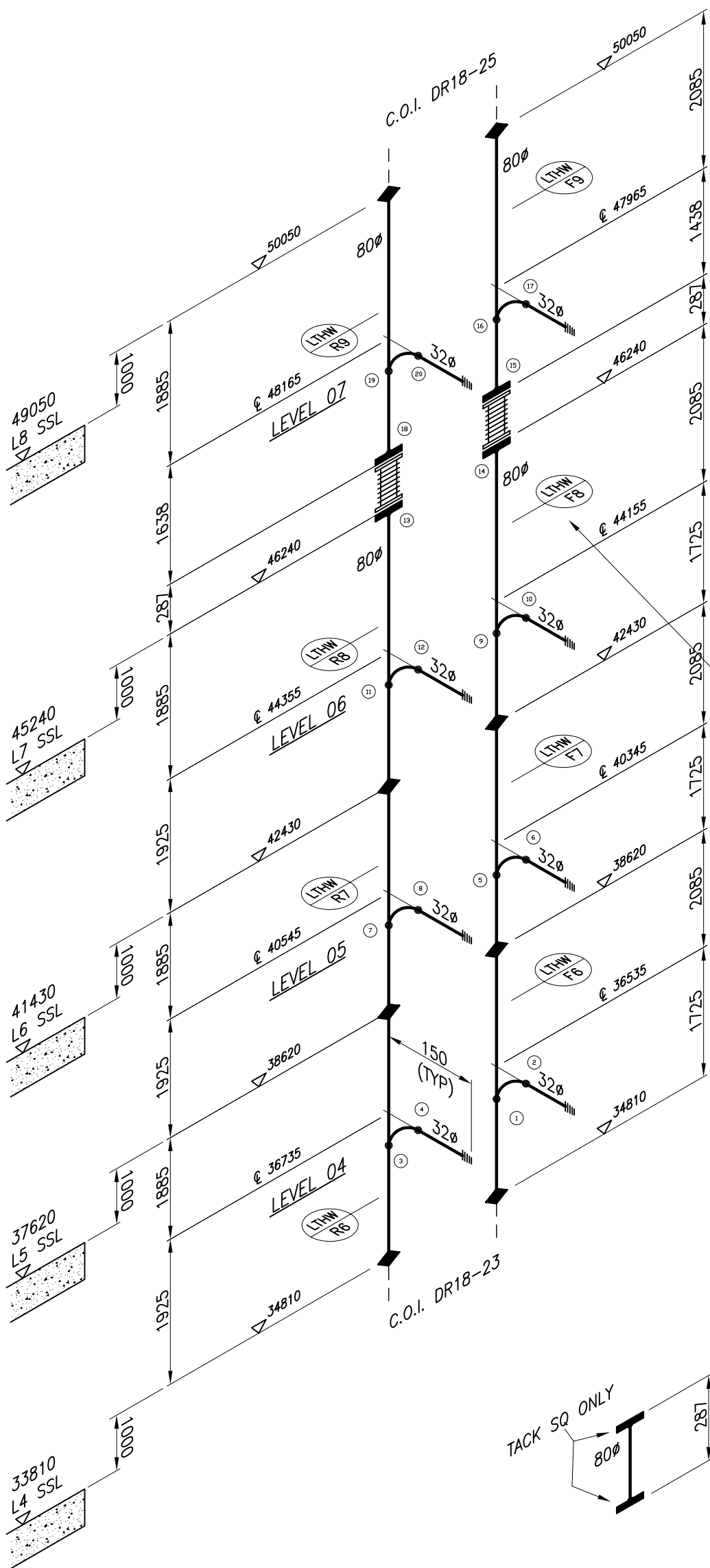


Piping Plan Reference :	N/A
Pipe Specification :	BS1387 HWT
Fabrication and Welding Code :	BS 2971 CL2
N.D.T. Requirement :	N/A
Painting/Finish Requirement :	Red Oxide
End Protection :	PLASTIC CAPS
Material Traceability Requirement :	N/A

No. Off	Item No.	Weld No.	Welder No.	Report No.
1	LTHW-F6	1		
1	LTHW-F7	2		
1	LTHW-F8	3		
1	LTHW-F9	4		
		5		
		6		
		7		
1	LTHW-R6	8		
1	LTHW-R7	9		
1	LTHW-R8	10		
1	LTHW-R9	11		
		12		
		13		
		14		
		15		
		16		
		17		
		18		
		19		
		20		
		21		
		22		
		23		
		24		
		25		
		26		
		27		
		28		
		29		
		30		
		31		
		32		
		33		
		34		
		35		
		36		
		37		
		38		
		39		
		40		
		41		
		42		
		43		
		44		
		45		
		46		
		47		
		48		
		49		
		50		
		51		

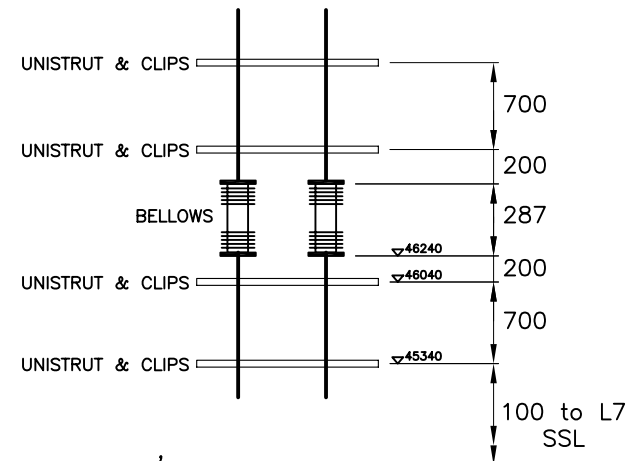
Client	Drawn By	CJH
Contract	Checked By	N/A
Location	Riser - DR 18	

Description	80Ø LTHWF/R
Job No.	DR18
Sheet No.	24
Rev.	A



PIPE SETTING OUT WITHIN RISER DR18

UNISTRUT AND CLIPS REQUIRED 200mm EITHER SIDE OF BELLOWS AND ANOTHER @ 700mm



Rev.	Date	Description of Revision	By	CHK
A	14-06	APPROVED FOR FAB'N.	CJH	/
0	04-06	ISSUE FOR APPROVAL	CJH	/

Notes
 1. All flanges are PN16 face unless otherwise noted.
 2. Where a flange is left loose, or a pipe marked with M.U.W., a pipe must be left at least 150mm longer than given dimensions to field fit.
 3. Unless stated otherwise, all dimensions and elevations to be centre line of pipe, all bends 90 deg., and all butt-weld elbows are L.R.E.