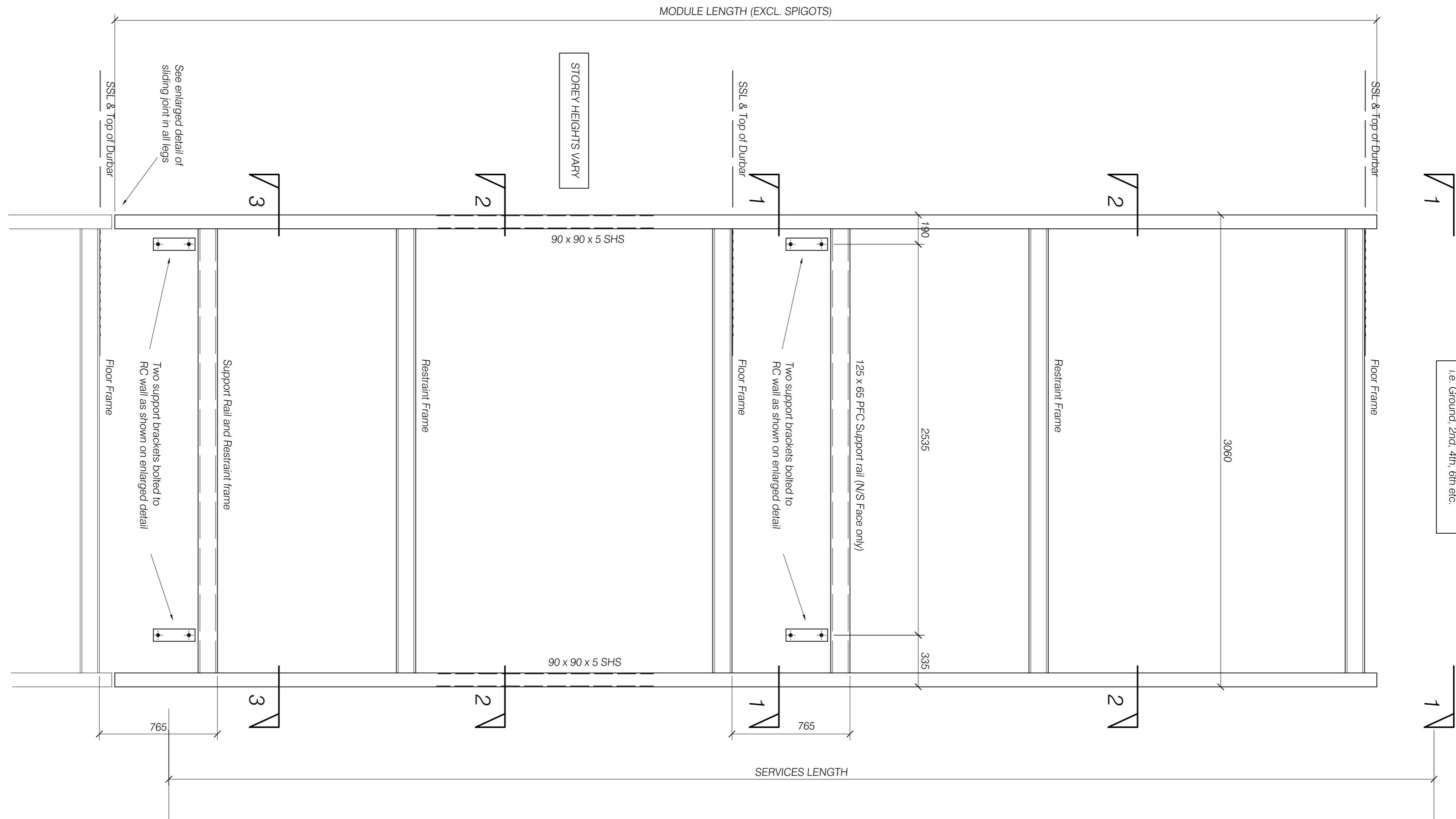
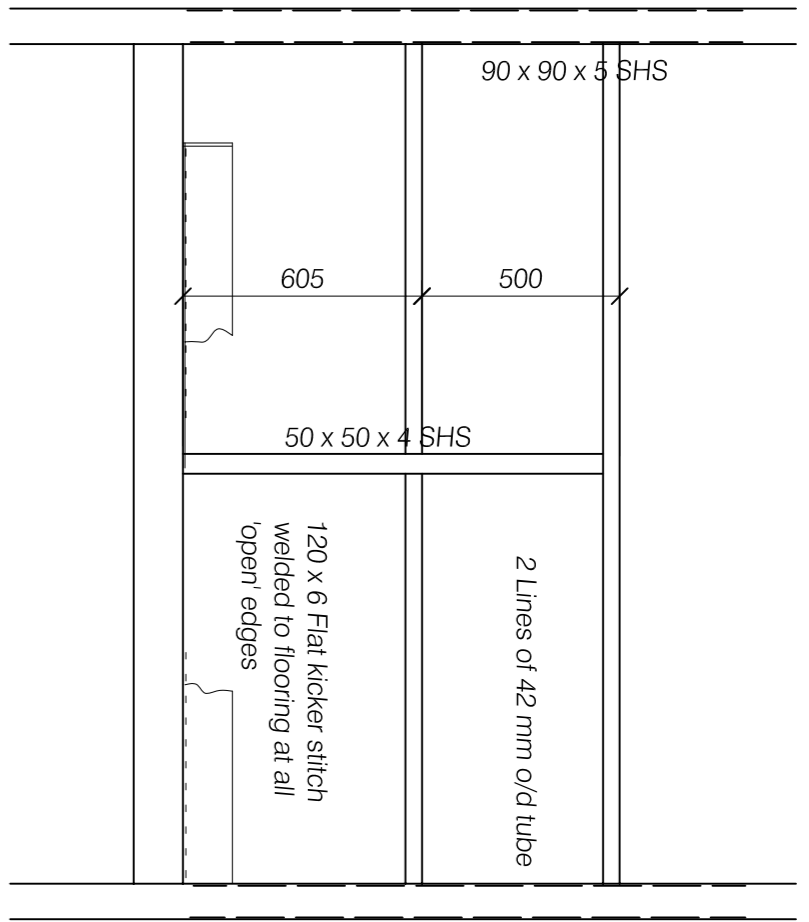


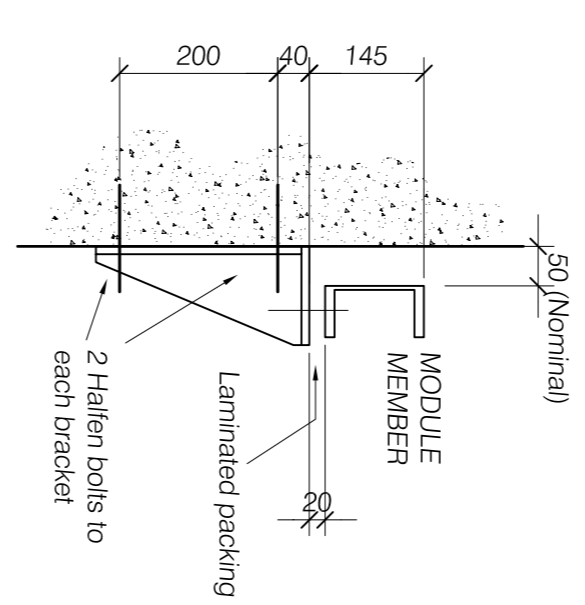
Joints between modules occur at all seven numbered floors i.e. Ground, 2nd, 4th, 6th etc.



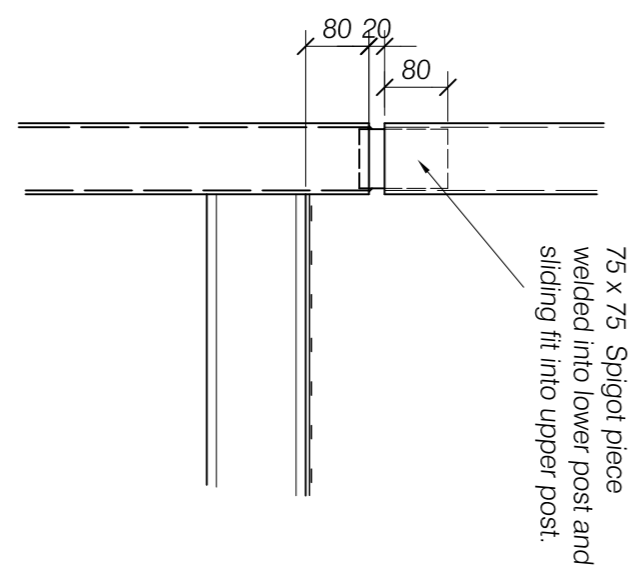
ELEVATION ON TYPICAL 'INTERMEDIATE' MODULE



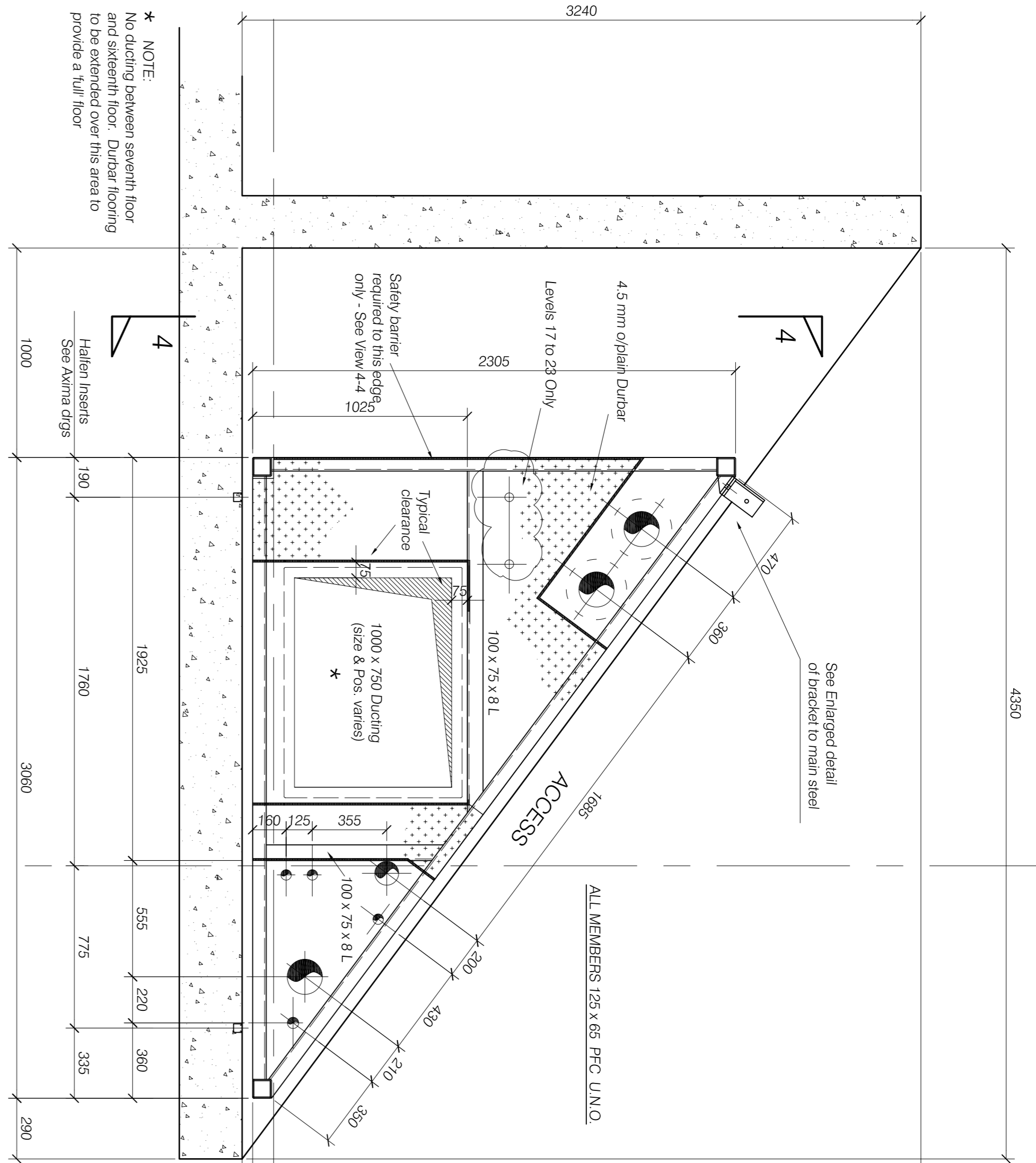
VIEW 4 - 4



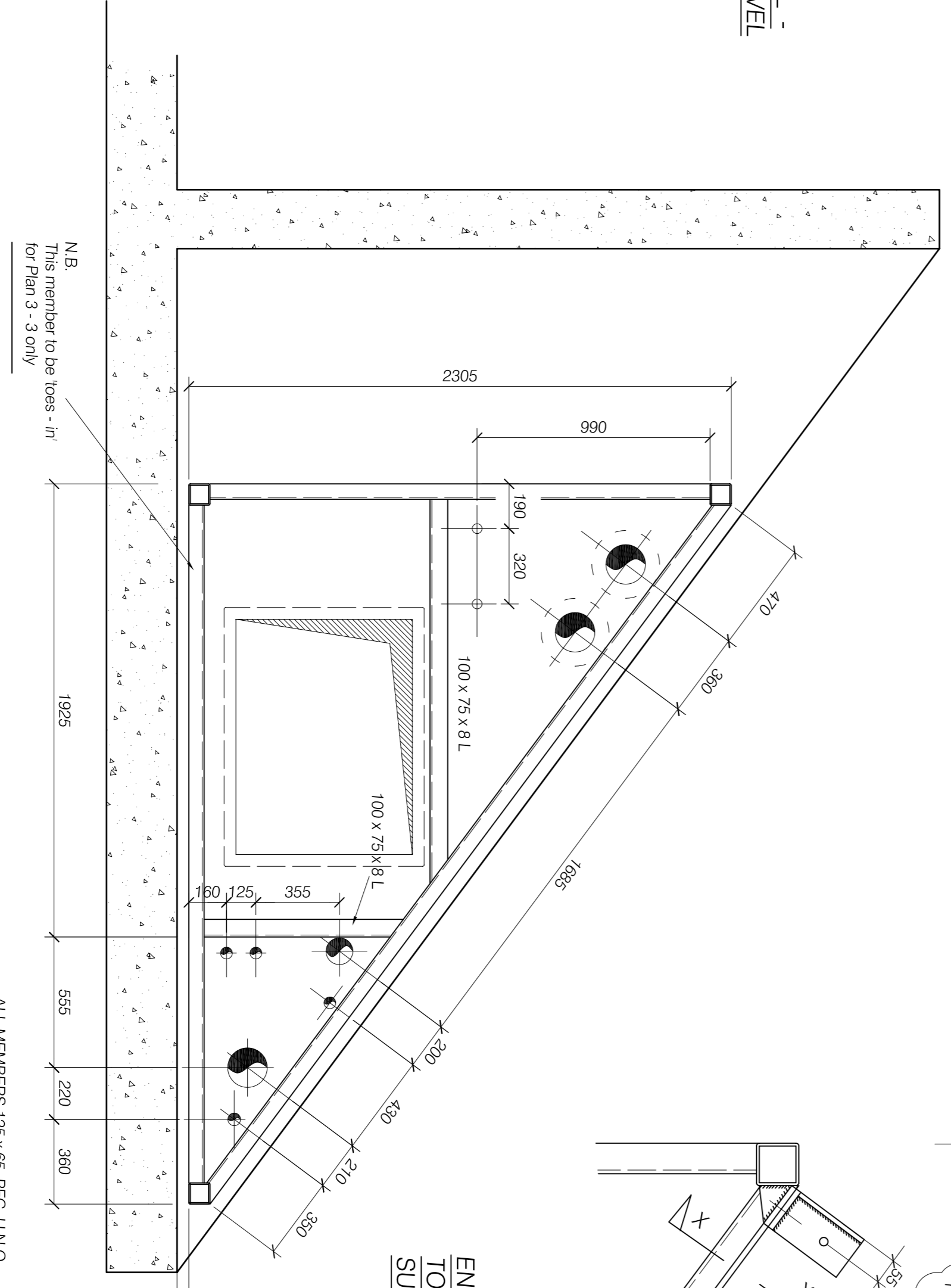
ENLARGED SUPPORT BRACKET DETAIL - TWO BRACKETS AT EVERY SUPPORT LEVEL



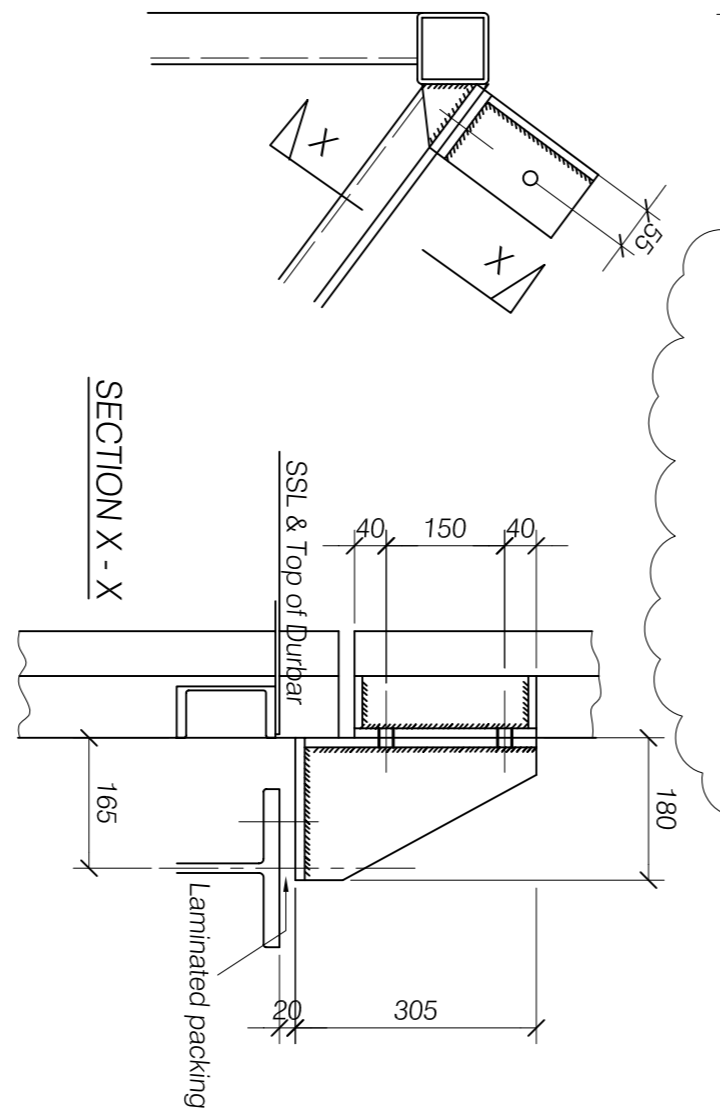
ENLARGED DETAIL OF SLIDING JOINT IN MODULE LEGS



PLAN 1 - 1 (AT FLOOR LEVELS)



PLAN 2 - 2 (AT RESTRAINT LEVELS)  
PLAN 3 - 3 AS 2 - 2 EXCEPT AS NOTED



ENLARGED DETAILS OF SUPPORT BRACKET TO MAIN STEEL ONE BRACKET AT EVERY SUPPORT LEVEL

This bracket detail subject to confirmation of main steel details and final calculation

NOTES:  
All material to be grade S275  
All connections to be welded  
continuous 6 mm filler weld  
unless shown otherwise. Bolts  
to be M16 (8.8) in 18 Ø holes  
Finish: ????

Client	Contract	Date	Drawn By	Checked By
		Jan 2006	CJH	
Description	Job No.	Sheet No.	Rev.	
RISER 4A TYPICAL STEELWORK ARRANGEMENT AND DETAILS	S.3773	01	P	
Rev.	Date	Description of Revision	By	CHK
P	12.01	Preliminary for discussion only	CJH	CHK